

# SCAN & Stilton Community Association Newsletter

Issue 399 Aug 2018

Now reaching 3500 people every month

## Freedom at Last !

### GOING FOR BALD !

COME AND SUPPORT A FUN CHARITY EVENT

### THE KITCHEN GARDEN

IT'S EASY TO GROW YOUR OWN HERBS

### ON REPORT

ANNUAL REPORTS FROM STILTON AND FOLKSWORTH

### SUPER TEDS !

SEE TEDDY BEARS GO PARACHUTING FOR CHARITY

### HERITAGE EVENTS

FREE SPECIAL EVENTS IN OUR AREA

P23

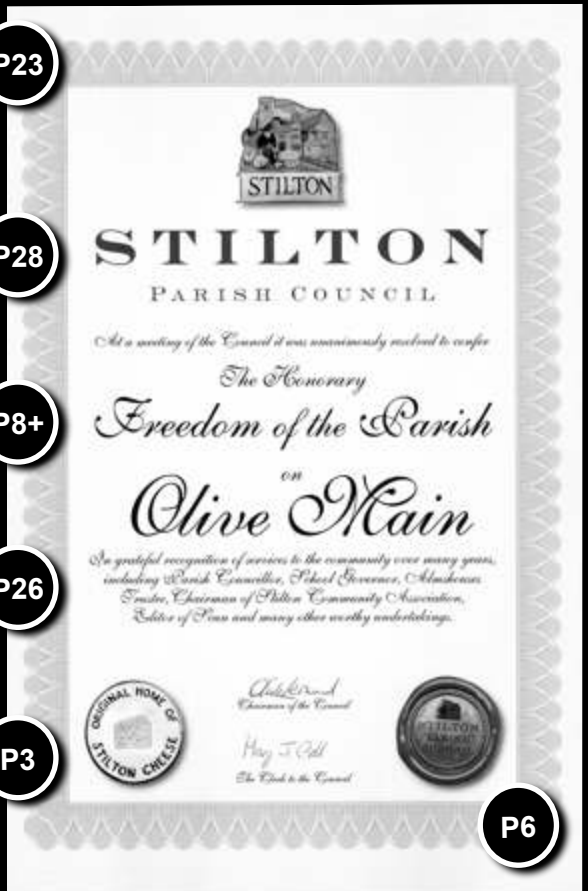
P28

P8+

P26

P3

P6



Stilton has formally honoured Olive Main's extraordinary contribution to village life by conferring an honorary Freedom of the Parish.

SCAN is published by The Stilton Community Association. All articles, original artwork and the **SCAN** name and logo are copyright. All trade marks recognised. Views of contributors are not necessarily endorsed by The Stilton Community Association. Reprints available from the Editor on request.



Editor: Olive Main 241206    Advertising: Christine Kime 243336    Production: Kelvin Davis 244140    Distribution: Hazel James, Pat Anslow

<u>Advertising Rates:</u>	<u>Monthly</u>	<u>Annual</u>	
Full page:	£30	£330	19 x 12.7 cm
Half page:	£15	£165	9 x 12.7 cm landscape - 19 x 6 cm portrait
1/3 page:	£10	£110	6 x 12.7 cm landscape - 12.5 x 6 cm portrait
1/6 page:	£5	£55	6 x 6 cm

All advertising copy or instructions to the **Advertising Manager** by **10th of month prior to publication**. Payment **in advance** to Stilton Community Association - **NO PAY, NO DISPLAY!** Advertisement orders **MUST** be accompanied by the advertiser's name, address and telephone number. You can use the order form on [www.stilton.org](http://www.stilton.org)

All other copy to the Editor, 8 Caldecote Road, Stilton by 14th of month prior to publication.  
Digital material in a neutral PC format please.  
email: [scan1@stilton.org](mailto:scan1@stilton.org)

Printed by:



## Grey Bin Days:

Mon 13th, 27th August;  
10th September

## Garden Bin Days:

Fri 10th, 24th August;  
7th September

## Recycling Bins:

Mon 6th, 20th August;  
3rd September

Please put your bins out  
after 6pm on the  
day before collection

[www.huntingdonshire.gov.uk/bins](http://www.huntingdonshire.gov.uk/bins)

## Index to Advertisers

Category	Service	Page
Retail	Watch & Clock Repairs	42
	Food & Drink	5
	Charity	41
	Furnishings	41
	Arts & Crafts	42
Health & Fitness	Exercise	44
	Foot care	46, 47
Financial	Accountancy / Payroll	47, 48
Animals	Vet, pet care	36, 39, 47
	Personal	Hair & Beauty
		Counselling
Trades	Building services	36, 42, 45
	Conservatories	44
	Heating / Plumbing	46, 48
	Electrical / TV	46
	Computer services	36
	Garden services	45
	Recycling	40, 42
	Removals	42
	Vehicle services	35
	Travel	Community bus
Professional	Architect / Civils	43
	Funeral services	45
Childcare	Pre-school	39, 43
Recreation	For children	10, 11, 33, 34, 38
		For adults

# The Parish Pump

## Local News

### Diary of Events

If you have a one-off event fixed in the next few months please contact the editor - 241206 or olivekmain@gmail.com

#### AUGUST

- 19<sup>th</sup> Keyboard Concert in Pavilion  
 25-29<sup>th</sup> Twinning Visit to St Christol  
 26<sup>th</sup> Going for Bald - charity event

#### SEPTEMBER

- 15-16<sup>th</sup> Norman Cross Heritage Days  
 22<sup>nd</sup> Twinning Safari Supper  
 23<sup>rd</sup> Keyboard Concert in Pavilion

#### OCTOBER

- 7<sup>th</sup> Harvest Festival Lunch  
 20<sup>th</sup> Church Quiz Night  
 21<sup>st</sup> Keyboard Concert in Pavilion

#### NOVEMBER

- 10<sup>th</sup> Church Safari Supper  
 17<sup>th</sup> Home Guard Band Concert  
 18<sup>th</sup> Keyboard Concert in Pavilion

#### DECEMBER

- 1<sup>st</sup> Chorale Concert in St Mary's  
 Christmas Fair Stilton Pavilion  
 8-9<sup>th</sup> Church Xmas Tree Festival  
 16<sup>th</sup> Keyboard Concert in Pavilion

### Heritage Open Days

6-9 AND 13-16 SEPTEMBER

Each year nearly 3000 organizations open up all across England FREE OF CHARGE so the public can visit and enjoy places that are not always accessible. Next month, **SCAN** will publicize those local to us. In the meantime please note that there are many right on our doorstep. To have a preview go to [www.heritageopendays.org.uk](http://www.heritageopendays.org.uk)

Four in particular:

Glatton - Beverley Nichols Weekend  
 9<sup>th</sup> September.  
[www.beverleynichols.org](http://www.beverleynichols.org)

Peterborough Priestgate Vaults,  
 Peterborough Museum  
 8<sup>th</sup> & 9<sup>th</sup> September.  
[www.vivacity.org](http://www.vivacity.org)

Norman Cross Napoleonic Prison Depot  
 15<sup>th</sup> & 16<sup>th</sup> September.  
 See ad in this issue.

Prebendal Manor Nassington  
 9<sup>th</sup> September.  
[www.prebendal-manor.co.uk](http://www.prebendal-manor.co.uk)

For the first time in its 24-year history this festival will take place over two consecutive weekends, 6-9 and 13-16 September

# A Holiday Outing

**Peterborough Museum & Art  
Gallery Priestgate PE1 1LF  
01733 864663**

Tucked away, just off Bourges Boulevard, this impressive former hospital, is not a dusty collection of old relics but a very special place that will interest everyone. There is a small shop and a pleasant café at the entrance (or exit). It is free of charge and open 10:00 to 17:00 Tuesday to Sunday. Also Mondays in the school holidays.

The permanent collection covers local archaeology and geology. There is an internationally famous collection of Jurassic fossils that fascinates all lovers of dinosaurs.

There is a reconstruction of a barrack block at the Norman Cross depot and another internationally important collection of prisoners' work. John Clare, the peasant poet, is represented. There are over ¼ million exhibits in all. At the top of the building is a reconstruction of the operating theatre of the hospital - suitably gory, making us very grateful to be alive in the 21st Century!

Over the summer holidays there will be special events and workshops for children of all ages.

[www.vivacity.org](http://www.vivacity.org)

[www.tripadvisor.co.uk](http://www.tripadvisor.co.uk)

Stilton & District Twinning Association



## **Anniversary Visit**

**25 to 29 August 2018**

St Christol Twinning Association and the Mairie of St Christol have invited a group from Stilton and district to St Christol for a celebratory visit.  
(Your visit could be part of a summer holiday to the region)

Once there visitors will be hosted by local families  
There will be a programme of visits and celebrations.

If you would like to take part in the visit please contact:  
Chris Walford. Tel 07720 718078 or email: [clstilton@btinternet.com](mailto:clstilton@btinternet.com)

Advert omitted

# Stilton Culture

## Freedom at Last !

HONOURING OLIVE MAIN'S CONTRIBUTION TO STILTON LIFE

All good things come to an end. When you've devoted half a lifetime of unpaid service to your community, it's tough to finally decide that it's time to step down and pass the baton to others. So it's right that the community should publicly acknowledge the debt it owes you.

That's why a crowd of well-wishers gathered in Stilton Pavilion on 24<sup>th</sup> June to recognise Olive Main's contributions to village life by the formal award of the Freedom of the Parish. Olive was presented by new Chair of Stilton Parish Council, Olive Leonard, with a handsome certificate that cited many of her services to Stilton. These include Parish Councillor, School Governor, Trustee of the Almshouses and - not least - founder of Stilton Community Association and Editor in Chief of **SCAN**. For most of us, any one of these would be credit enough!

Tributes were made by many, including the Maire of St Christol, read by Danielle Robail, and the guests added their own personal words in a book of appreciation.

Olive, you have so much to be proud of.



Danielle Robail reads out a message from the Maire of St Christol.

### WHAT DOES 'FREEDOM' MEAN?

Today, being made a Freeman is purely honorary, but in mediaeval times it conferred privileges such as the right to trade or own property. And - apocryphally - the right to drive livestock through the town or to be hanged in a silk rope!



# Your Village Needs You

# Could you **VOLUNTEER?**

Stilton Parish Council are seeking to recruit a band of volunteers to help run and manage the village amenities, including the Pavilion, Sports Field and Play Areas.

We are looking to recruit people to undertake or support the following roles:

## • User Groups Relationship Management

These Volunteers will liaise with regular users of village facilities to manage the requirements of all groups and ensure standards are maintained.



## • Business Development

Volunteers to help develop the use of village facilities through events marketing and promotion activities.



## • Communications Management

To help update and develop our website and social media activities.



## • Youth Support Coordinator

To mentor and encourage youth activities, including development of the Skate Park.



## • Green Space Management

Volunteers to oversee the contractors who maintain village green spaces.



Do you have the experience needed for any of these roles?  
Would you like to make a difference to your village?  
Register your interest overleaf and help make Stilton great!

To register your interest or find out more information, please either email [stiltonpc@yahoo.co.uk](mailto:stiltonpc@yahoo.co.uk) or [markangus.stilton@gmail.com](mailto:markangus.stilton@gmail.com) or write to:

Mary Croll, 10 Caldecote Road, Stilton, PE7 3RH



# An Extraordinary Year

## ANNUAL REPORT OF STILTON PARISH COUNCIL 2017/18

---

This has been an extraordinary year in the history of Stilton Parish Council, *writes outgoing Chair, Olive Main*. At one time we had only seven members valiantly coping with the new challenges of the Pavilion and ever-increasing bureaucratic and legal changes. Five members were seriously ill for protracted periods and, most sadly, Tim Stokes died after a courageous fight against cancer. Tim joined the Council in 2015 with valuable experience of Parish Council membership. He contributed to the Pavilion development and also had plans to put Stilton 'on the map' as a music venue. Over the year Mark Angus, Jayne Beale, Olive Leonard and Simon Steward joined the Council, and Sue Ayres and Dee Darnell resigned. In July Kathy Ray left after 20 years of service as RFO. We were very lucky to be able to appoint Kate Waller to the post. Together with Mark Angus and Olive Leonard she has undertaken a thorough and lengthy review of all our procedures and policies and has worked through the problems associated with cash flow. She has ensured that our financial transactions remain within the regulations. She also produced a budget for 2018/19 with an increase in the precept of 5% (£4 per annum on a Band D property) which is in line with most other parish councils. The sale of Stilton Memorial Hall for £110,000 to Shabhir Dahanni has allowed progress to be made on completing the Pavilion, the external works will begin in May and the fixtures and fittings are being purchased at present.

Inevitably, running the Pavilion has dominated the year. The building has quickly become a part of village life with an army of regular bookings and a satisfactory number of casual events. Once the building is fully equipped and the kitchen floor problems solved the IMG want to mount a marketing campaign to attract weddings, meetings, musical events etc., to take advantage of the wonderful acoustics and facilities.

The Parish Council now employs more people and has had to undertake an urgent review of policies and practices to bring us in line with the law. This is not yet fully completed but is well on the way, thanks to Mrs Waller, Mrs Leonard, Mark Angus and Mrs Croll. With many new councillors, training is to be organized and it is hoped that other councils will also take part.

Staffing the Pavilion is not yet finally settled. A Caretaker/Cleaner was appointed but fairly soon ill health and family problems meant he could not carry on. Cleaning has been shared between Ian Croll, Lorna Parmenter and Julie and security is now partly left to trained volunteers. The CCTV is not yet fully operational and the service provided by our contractors is not entirely satisfactory.

The best news is the opening of the football pitches. Nine junior teams are playing and two senior teams will now have a home ground. This situation comes after a long period of hard work, particularly by Julian



Pagliario and Chris Walford, but also drawing on a large number of volunteers who turned out to work on the field. It is now in very good shape.

The other good news is the handing over of the Skate Park into the ownership of Stilton Parish Council. After a ROSPA inspection minor repairs were identified and on ROSPA's advice the fence was partly removed.

Time was also spent on the working of the septic tank, but this is now completed. We still need outdoor storage and the external works to be completed.

The most frustrating job still incomplete is the provision of telephone and broadband by BT. This has been delayed again because the scheme originally proposed will now need to be changed to meet the requirements of the landowner.

While the Pavilion has inevitably taken up much of our time and energy the rest of the Council's business goes on. The big planning issue is the application to close the footpath across the previous open space in Gala Close, now built over. The long delays and many meetings needed are a direct result of Cambridgeshire County Council's lax procedures over many years. Mrs Croll, Mr Angus, Mrs Leonard and Mr Walford worked hard on this.

The village maintenance contract came up for renewal and was awarded again to Fergusons. Their work is generally satisfactory and the hanging baskets are always spectacular.

All councillors take an interest in the village environment. Speedwatch is organised by Keith Bull, who is now a Parish Councillor. Our re-elected District Councillor, Tim Alban, is very active and keeps in close contact with the Parish Council. (eg. on potholes). He is also closely associated with County Councillor Bywater and Shailesh Vara MP on trying to get improvements in broadband speeds and mobile phone connections.

As this is my last report, after 32 years on Stilton Parish Council, I hope I am allowed to sign off by thanking all those who have given so much service to the Community acting as Parish Councillors. None of us are paid; it is not often we claim expenses, but we all give gladly of our time and expertise in trying to make Stilton a lively, safe and inclusive place in which to live.

## **Men's Prayer Breakfast**

**Stilton Church  
Meeting Room  
8 - 9 am**

**Aug 11th  
(Second Saturday in the month)**

For further information, call  
Nigel Rosbrook (01733) 246396

# Stilton Almshouses

## TRUSTEES REPORT TO THE ANNUAL PARISH MEETING MAY 2018

The trustees continue to meet regularly to ensure the effective management of the properties and to ensure that the residents are happily settled, *writes Chris Walford, Chairman.*

Redecoration, repairs and replacements were conducted at number 14 prior to the new resident taking occupancy in September 2017. The bathroom floor drainage problems caused considerable delay.

The yearly boiler maintenance has been completed. The Annual Inspection noted various areas of concern; the replacement of roof tiles was a main priority and this work has been successfully completed.

The annual accounts are professionally and independently audited and submitted to the Charity Commission. Following the cost of the necessary work for number 14 and a new occupant in residence, financial recovery is ongoing.

The road drainage problem outside number 16 remains unresolved.

Building two further Almshouses on the garden area has been suggested. The initial Planning detail has been forwarded to Huntingdonshire District Council for their comment.

### TRUSTEES

Thanks are recorded to the seven Trustees who share the management responsibilities of the Charity:

Chris Walford	Chairman
Doug Maltman	Treasurer
Yvonne Warner	Secretary
Linda Worsley	
Olive Main	
Phil Shailer	
Mary Croll	

## Stilton Stay & Play

Bring your children - 0-5 yrs - to play and meet new friends

Wednesdays in Stilton Pavilion 9:00 - 10:15am

£1 donation per child

[www.facebook.com/stiltonstayandplay](http://www.facebook.com/stiltonstayandplay)

# Stilton Parish Councillor Details

Olive Leonard (Chair)	olive.leonard@gmail.com	243725, 07817 257281
John Leonard	john.leonard.stilton@gmail.com	07966 563262
Chris Walford	clstilton@btinternet.com	241376
Mark Angus	mark.angus@fsmail.net	244006
Jayne Beale	jaynebeale@hotmail.co.uk	241396
Philip Shailer	philshailer@sky.com	242143
Simon Steward	simon@easiprintandcopy.co.uk	245754
Dee Darnell	dee.darnell.stiltonpc@gmail.com	245250
Keith Bull	keith.bull.stiltonpc@gmail.com	245250
Don Darke	janet.darke@yahoo.co.uk	243556
Mary Croll (Clerk)	stiltonpc@yahoo.co.uk	241042



Bored when school is out? Try some...

**Fun Activities**  
 Capture the Flag  
 Aliens v Zombies  
 Cat & Mouse  
 Arts & Crafts

**Tournaments**  
 Dodgeball  
 Benchball  
 Football  
 Handball

# Holiday Fun !

Just Do Sport will be running a Holiday Club at Stilton C of E Primary Academy

**August 20 & 21, 9am - 3pm**

£12 per child per day

**Lots of indoor and outdoor activities!**

**Sports**  
 Archery  
 Boxercise  
 Dance  
 Gymnastics

**Flight School**  
 Flying drones  
 Paper Planes  
 Hand-thrown  
 Gliders

Full information from Stilton School office, or book a place online now at  
<http://justdosport.org/31016/stilton>

Stilton Parish Council

We are busy organising our first

# Village Christmas Fair

Saturday 1st December 2018 at Stilton Pavilion

Are you interested in joining our working group  
or in helping on the day?

We are also looking for:

- Stallholders
- Local crafts
- Gifts
- Games
- ... *anything* Christmassy!

Please contact Dee Darnell

dee.darnell.stiltonpc@gmail.com    Tel: 07806 833555

## Stilton Stumblers Summer Itinerary



12 Aug	The Burnhams	26 Aug	tba
9 Sept	Warminster - Fotheringhay	23 Sept	Staughton Moor

Our regular walks are between 5 - 8 miles and meet at 10:00am at The Pump

For more information about Stumbling, just Google 'Stilton Stumblers'  
or call Shirley on (01733) 246209 - or just turn up on the day with your boots on!

# Keep 'em Coming !

## GATHERING PICTURES FOR THE STILTON CALENDAR

We've been getting some great submissions for the Stilton Calendar, but we still need more! You've only got about eight weeks to get your entries in, so don't forget.

### RULES

- Images must be your own original work and not previously published anywhere.
- Images must be in **landscape format**.
- If images include identifiable people, you must obtain their permission to use the pictures. In the case of children, **written** permission of their parent or guardian.
- Submit your images by 30<sup>th</sup> September 2018 to scan1@stilton.org. (Large files can be transferred using Dropbox or a similar Cloud service.)
- Winning images will be selected by Stilton Community Association.

### SUGGESTIONS FOR SUBJECTS

- The garden/countryside in summer
- Village/garden wildlife
- My business/club/church/school
- Local landmarks
- Village events or activities
- Landscapes / mood images

Go on - be creative!

## A Big Thank You

A Tea Party in aid of Breast Cancer was held at Sheila's house in Folksworth on Saturday 14<sup>th</sup> July. A **BIG** thank you to everyone who donated, helped or came to the event. It was lovely to see so many people attend on such a lovely afternoon, when we raised a brilliant £400.

On behalf of Mum, thank you all very much for your support.

*Sue Brooks*



## Contributors !

### We want your material!

For **SCAN**, email Olive Main at olive.main@googlemail.com or call her on 241206

For **Folklore**, email to Sarah Abbott at abbottsarahj@hotmail.co.uk or call her on 247275

# Stilton in Tune

WELCOME OUR LANCASHIRE INSPIRATION !

In sweltering heat, *writes Tony Oliver*, (mustn't complain - a real summer!) we prepared for our July musical event, featuring our first ever artiste at the Pavilion, Pete Shaw, who performed in April last year. Pete was almost a 'guinea-pig' as we were unsure where to set up in the big hall and what the acoustics would be like. We needn't have worried as the latter are superb and the position we set up remains the same to this day. By the time you read this you will have missed his playing, unless, of course, you were fortunate enough to have been there!

Our last event had the wonderful keyboard player Chiho Sunamoto, who gave us a superb mixture of music. She was occasionally joined for duets by her husband Jon Smith (who played for us in April) and they were well received by our appreciative audience. Unfortunately, our start to the afternoon's entertainment was a bit of a rushed set up as we (myself and my wife Pat, Chiho and Jon) were caught up in the results of two major accidents and didn't arrive at the venue until 2:10pm for a

2:30pm start. We normally start set up around 12:30! With lots of help we got under way just 10 minutes late; our thanks to all for help and understanding.

Now to August when we are pleased to welcome back that lovely Lancashire lass Elizabeth Harrison, whose idea of charity based concerts our *Stilton in Tune* is taken from. She was 'instrumental' in my starting the venture and I hope, despite it being holiday time, you will come along to support a good cause and enjoy some great varied music and comical tales.

Concerts start at 2:30pm (doors open 2pm) and, with an interval for free refreshments, finish around 5pm. Do come and join our music-loving group; you will be welcomed by our friendly team of helpers. Oh, the cost, just £7.50 per person! We look forward to seeing you at the Pavilion.

For further details please contact Tony Oliver: 01480 474282 or 07918 602600, email [tony.oliver5@btinternet.com](mailto:tony.oliver5@btinternet.com).

## Help the Foodbank

The Foodbank helps those in need in our local communities. Staple foods are always welcome, especially tinned vegetables, tinned meat and bottles of squash.

Please leave your donation in Stilton Church porch or contact Pearl (241114) if you need any items collected.

# From the Pulpit

News from St Mary  
Magdalene Church

## August Services

JOIN US IN OUR WORSHIP AT ST MARY'S

Sun 5<sup>th</sup> 11:15am Holy Communion led by  
Revd Ian Browne

Sun 12<sup>th</sup> No service

Sun 19<sup>th</sup> 11:15am Morning Praise and  
Baptism led by  
Revd Richard Gibbs

Sun 26<sup>th</sup> 8:00am Holy Communion (BCP)  
led by Revd Richard  
Gibbs

## Stilton Church Coffee Morning

August 18th

10:30am - noon

Everybody is welcome!

What would summer be without the...

St Mary Magdalene Church, Stilton

# SUMMER QUIZ ?

*'Where on Earth ... or not?'*

Entries £1 each from Pat Maltman (242229) or Hi-Lite

*Proceeds to St Mary Magdalene Church*

# Folklore



News & Info for Folkestone,  
Morborne & Washingfold Folk

WHEN	WHO	WHAT
Saturday 29 <sup>th</sup> September	Village Hall	Autumn Fayre
Saturday 1 <sup>st</sup> December	Village Hall	Bingo & Bar

## Sarah's Snippet

I hope you are enjoying the holiday season. I won't mention the weather as the last time I made a comment the snow arrived. Please let me know if you have any events or news you'd like published. The deadline for getting information to me is the 14<sup>th</sup> of the month. You can either email me [abbottsarahj@hotmail.co.uk](mailto:abbottsarahj@hotmail.co.uk) or give me a call on (01733) 247275

## Folkestone Rainbows ENJOYING THE LACK OF RAINBOWS!

Folkestone Rainbows have had a busy last half of the summer term. They have prepared gifts for their dads on Father's Day; had a games evening which they organised themselves, and had a cuddly toy pet show. The week after the pet show, we were due to go to Pets at Home to see some real life animals but the store had to cancel, unfortunately because their animals had contracted ringworm and it was unsafe for us to visit them. We hope to go at some point in the autumn term.

We had our regular visit from The Mad Scientist, when we made two types of slime - one from cornflour and the other from PVA glue! As always, it was an interesting and fun evening. The following week we mixed up a bubble solution and had a happy time outside blowing all sizes of bubbles, seeing how high they could float and how long they lasted before they went pop!

We were very lucky to be kindly invited by Sherrie Dalton, one of our Rainbow mums, to visit her beautiful horses in The Paddocks. We had another enjoyable evening and were allowed to stroke them and to brush Magic, her gorgeous Shetland pony and feed him carrots! He was so placid and I think he enjoyed himself too! A very big thank you to Sherrie for inviting us and making us feel very welcome.

We have been extremely lucky with the weather this term and have not had to cancel any outside events. So we were able to have a great time down at The Park for our last meeting of term. The Rainbows played on all the apparatus and ended the session with some party food and drink.

Now we look forward to the summer holidays and hopefully more sunny weather. We also look forward to returning in September for the autumn term and more adventures!



# FOLKSWORTH ART CLUB

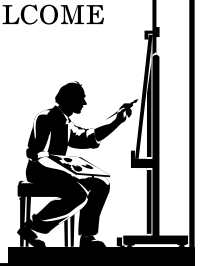
We meet on Thursdays from 12:30 to 4:30 pm in Folksworth Village Hall to paint/draw in a friendly, informal atmosphere, helping each other when necessary.

NEW MEMBERS AND BEGINNERS ARE VERY WELCOME



Why not join us? Bring your own materials.  
£3 per session, including refreshments.

Contact Cherry Hadley Tel: 01733 244258  
- or just come along and enjoy yourself!



## Folksworth Ladies' Circle

We had several visitors at the July meeting where we heard how to detect scams on the phone, the computer or at the front door. We look forward to welcoming our visitors back at our September meeting.

We had a very enjoyable afternoon at the Pre-school Fete, where we ran a tombola. We also enjoyed a visit to Toilethorpe to watch 'School for Scandal'. We don't meet in August but instead hope to have a coffee morning and perhaps an afternoon tea.

We meet on the fourth Tuesday of the month at 7:30pm in the Village Hall. Ladies of all ages are most welcome and the cost to non-members is just £1

## News From St Helen's

Our August services are both at the Church:

12<sup>th</sup> August - Family Folkus - 9:45am  
*Please note the change of venue - this service will be in the Church*

26<sup>th</sup> August - Holy Communion 9:45am

After their June service, Family Folkus held a Coffee & Cupcake event in aid of research into dementia and Alzheimers. £110 was raised. Thank you to all who made cakes and supported this cause.

We would also like to thank Folksworth School's PTA, who have donated a gazebo to St Helen's

# Folksworth, Washingley & Morborne Village Hall

Thank you to all who came to our AGM. It was very helpful to discuss our plans with you and to hear your ideas, writes *Annie Blair, Chair of the Management Committee*. Here is a precis of my full Chair's Report, July 2018.

We have been particularly busy this year with Phase 1 of the Improvement Project completed and new policies and procedures implemented. Alongside our administrative and practical responsibilities the committee has continued with fund raising toward our main improvement project.

In May we received full planning permission for the Phase 2 improvements (new toilets and storage) and an extension (new meeting room). We would like to thank the Parish Council for their full support and their submission of the planning application. In particular we would like to thank John Blair, Saunders Boston Architects, for his tireless work in preparing the drawings, site plans, and detailed proposals/reports, which helped ensure that the planning submission was successful. We can now begin applying for grants and seeking funders.

## PHASE 1 IMPROVEMENTS

Phase 1 was completed by September last year. To close the hall for a long period would be difficult for our regular users so finishing by the end of the summer quieter period was very important. We thank the builder Princebuild for ensuring the project was completed efficiently and on time. Works included: new boiler and radiators; new lighting; new storage cupboards; new fire exits; new all-weather play area;

decoration and new signage. Users have really appreciated these improvements.

We would like to thank Huntingdonshire District Council for the grant toward the astro-turf and our last District Councillor, Rita Matthews's support with this. The Parish Council grant toward shelving in the cupboards is also much appreciated.

## ANCILLARY IMPROVEMENTS

Ongoing maintenance, and often, instant fixes are always required. Chris Blythe is sometimes called out at very short notice and we would like to thank him for providing this 'small works' service.

Other local professionals also help us at short notice, at low cost, and this is much appreciated. The PC Maintenance Grant is very important to ensure the hall can continue with an appropriate maintenance programme.

## BOOKINGS

It was unfortunate this year that Beavers were unable to continue using the hall. We hope all the Beavers found other Lodges and would like to thank John Bishop for his long service as a trustee.

In addition to public meetings, polling, and many private parties and celebrations, the hall continues to attract regular users: Brownies; Rainbows; Art Club; Carpet Bowls; Ladies Circle; Peterborough Opera; Pre-School; Toddlers; Parish Council; Yaxley Runners/Joggers, St. Helen's Church of England, Pilates, Dancing, Christian Congregation in the UK. We welcome the Terrier Club as new regular users. Joy Blythe works tirelessly as our booking clerk and the committee would like

to thank her for her hard work.

## POLICY AND PROCEDURES

Our processes and policies must be compliant and the hall 'fit for purpose'. This year we have been updating our policies to include, for example: Data Protection and GDPR; Vulnerable Persons: Privacy; Health and Safety and Risk Assessments; Volunteers; Financial and Reserves; Equal Opportunities.

## FUND RAISING

This year we have held bingo nights: a quiz night; Burns Night, Plant Sale; Book Fayre and Art Exhibition. Some of the events were particularly popular and we would like to thank all the committee and volunteers for their hard work. We will continue with our fund raising events and all innovative ideas are welcome for all the community to enjoy.

## COMMUNICATION

We communicate regularly in **SCAN**, via leaflet drops and our Facebook page. Stephen Abbott has kindly volunteered to be our administrator for this page.

## COMMITTEE MEMBERS

Finally I would like to thank all on the management committee for their voluntary work and time over the past year. In particular Sarah Abbott, our new Treasurer, for her financial expertise and bringing us into the 21<sup>st</sup> century with online banking.

We do have one very big plea: we are still looking for a Secretary. After extensive advertising and leaflet dropping we have been unsuccessful, so please let us know if you are interested.

We meet regularly to maintain the hall to an appropriate and safe standard for all users. The committee is constantly considering and reviewing future plans and strategies to ensure the hall remains a central and viable community facility for Folksworth and the surrounding villages. Now we have planning permission secured we will be embarking on a campaign to raise money for the next stage of our Improvement Plan, which is a very exciting time for us all.

## Yaxley Singers

We meet on Wednesdays in Yaxley Methodist Church, Main Street, Yaxley at 7:30pm and sing a wide variety of music; songs from the shows, Easter music, modern pop 'classics' etc. Sometimes in parts, sometimes in unison. You don't have to read music (but it does help).

We give occasional concerts and the proceeds go to charity; this year to MAGPAS, the local emergency service. If you would like a taster come along one Wednesday. There is a contingent from Stilton, led by Mary Croll who can answer any questions. (241042)

# Around the Parish

## FOLKSWORTH & WASHINGLEY PARISH COUNCIL REPORT

---

### COULD YOU BE A COUNCILLOR?

There are still two vacancies on the Parish Council. If you would like to find out more about being a Councillor please get in touch with me.

### TOUR OF CAMBRIDGESHIRE

Council did not receive any complaints about the event this year although there were some suggestions that additional marshals would have been useful at some of the junctions. Councillors aim to meet with the organisers ahead of next year's event so if you have any comments to make please let me know or attend the meeting.

### PUBLIC FOOTPATHS

I have received many complaints about public rights of way which have become overgrown and in some areas dangerous to walk on because ditches are not always apparent. The days of local farmers being paid to keep the paths clear are long gone (although some farmers continue to do this anyway) and it is the responsibility of the County Council to maintain them. I do report problems but, due to cutbacks, the County Council maintenance programme has been drastically reduced; some only cut every two years.

This is not something the Parish Council could take on without hugely increasing the Precept but if you have a view on this we would like to hear it. In the meantime, keep reporting problems to me and I will do my best to get something done.

### POTHoles, DAMAGED PAVEMENTS AND OVERGROWN HEDGES AND TREES

I still receive many reports from residents regarding these and I make official reports to the various higher tier authority. Unfortunately, our requests are often met with a negative response, either due to finances or a decision that the works are 'unnecessary at this time'! I will continue to make the reports so please do let me know if you see anything.

### TRAFFIC SURVEY

The survey should now either be well under way or completed and I will post the results in next month's report. The aim of the survey is to monitor the frequency and weight of the HGVs going through the village and Council plans to submit a bid on the County Council LHI scheme to have the weight limit through the village restricted to 7.5 cwt.

### POCKET PARK DEVELOPMENT

Now that the urgent tree works to the area have been carried out work can start on the development of the pocket park/community orchard to the side of the pond in Elm Road. Council needs volunteers to help with the clearing of nettles/brambles etc. and the removal of ivy from some of the remaining trees. If you feel you could spare some time to help with this, please contact either Cllr Alison Brown, Cllr Patrick Clarke, or the Clerk. Council is participating in the Orchards East Heritage Lottery Fund project in the development of the community orchard.

## MEETINGS

The Parish Council meets on the third Tuesday of the month, except August, at 7:20pm in the Village Hall, Manor Road, Folksworth. Planning meetings are scheduled as and when necessary. Agendas and Minutes can be found on the noticeboards and on Council's website.

All meetings are open to the public and there is an opportunity at the start of each meeting for members of the public to speak.

If I can help with anything at all, please contact me.

*Jackie Stanbridge  
Clerk to the Council/RFO*

# Movers & Shakers

## FOLKSWORTH PARISH COUNCILLORS 2018-22

Mark Randall (Chairman)  
4 Castel Way  
Folksworth PE7 3TX  
01733 248202

Patrick Clarke  
16 Townsend Way  
Folksworth PE7 3TU  
01733 241860

### District Councillor

Cllr Tim Alban  
36 Worthington Close  
Stilton  
PE7 3XF  
07913 101145  
tim.alban@huntingdonshire.gov.uk

Lisa Blackman  
(Vice Chairman)  
Manor Farm  
Fen Lane  
Stilton PE7 3SA  
07919 366465

Gordon Fenwick  
3 Bullock Road  
Washingley PE7 3SH

### County Councillor

Cllr Simon Bywater  
9 Crabapple Close  
Sawtry PE28 5QG  
01487 831079  
Simon.bywater@cambridgeshire.gov.uk

Alison Brown  
37 Manor Road  
Folksworth PE7 3SU  
01733 240501

Judith Ford  
10 Chervil Close  
Folksworth PE7 3SZ  
01733 240440

Steve Chapman  
5 Chervil Close  
Folksworth PE7 3TZ  
07887 545407



Folksworth & Washingley Parish Council PO Box 1285 Peterborough PE2 2NN 07724 171158  
clerk@folksworthandwashingley-pc.org.uk www.folksworthandwashingley-pc.org.uk

Advert omitted

# Event Horizon

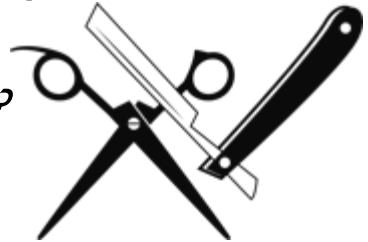
What's on in & around  
Stilton & Folksworth!

In aid of MAGPAS Air Ambulance  
A charity event for all the family!  
At The Stilton Cheese Stilton  
Sunday 26th August

## ***GOING FOR BALD***

Snip-off at 13:00hrs

- See willing volunteers literally go bald!
- Auction for the first cut
- Donations for all other snips and shaves
- Will it be just the head?
- Or a *whole body waxing?*
- Live music and BBQ



The Air Ambulance relies totally on donations from the public.

It is a vital asset and literally a life saver  
so come and help raise funds to keep it in the air.

Donate at [www.justgiving.com/fundraising/go-donate](http://www.justgiving.com/fundraising/go-donate)

OR

Via text - send waxd81 followed by donation amount £ to 70070





# where to do it and who to do it with !

	<b>WHERE</b>	<b>WHO</b>	<b>CALL</b>
	Stilton Church Meeting Room Playgroup Stilton Pavilion Folksworth Village Hall Folksworth Village Hall	Michelle Pratt Leslie Kirk Rebecca Mills Georgina Nikki	07906 114942 247682 07498 528393  07542 172075
	girlguiding.org and click on 'Get Involved.' Stilton Playing Field		
	Stilton Pavilion Folksworth Village Hall Stilton Church Meeting Room Stilton Church Meeting Room	Mrs Croll Jackie Stanbridge Pat Maltman Sylvia Ward	229130 07724 171158 242229 242457
	St Mary Magdalene St Mary Magdalene St Mary Magdalene See notice boards or Stilton Group of Churches' Facebook for details Stilton Church Meeting Room Stilton Church Meeting Room Stilton Church Meeting Room St Mary Magdalene Stilton Church Meeting Room St Mary Magdalene Folksworth Village Hall	Revd Richard Gibbs Revd Richard Gibbs Revd Richard Gibbs Irene Goldsmith Pat Maltman Nigel Rosbrook Revd Richard Gibbs Pat Maltman Stuart Reed	248701 248701 248701 244229 242229 246396 248701 242229 241114
	Stilton Church Meeting Room Stilton Pavilion Stilton Pavilion Folksworth Village Hall Stilton Pavilion Stilton Pavilion Stilton Pavilion Folksworth Village Hall Folksworth Village Hall Stilton Pavilion Stilton Pavilion Stilton Church Meeting Room Stilton Church Meeting Room	Olive Main Vicky Leschallas Frances Ellis  Louise Knox Steve Ambler Scott Sherrington  Brian Bowen Brian Appleyard Sue Gibbs Sue Gibbs Glen Woolner Alex Weyman Cherry Hadley Phyllis Hope Yvonne Wagstaff Shirley Gregory Maggie Rachael Joyce DanceXcess	241206 07919 053140 07714 773528  07957 983950 242156 242409  241310 244642 07709 938122 07709 938122 07771 784643 01480 413353 244258 240947 243370 246209 07788 919899 07789 292441 07768 435362
	Outside The Talbot Elm Road Yaxley Health Centre Yaxley Health Centre CARESCO Centre CARESCO Centre CARESCO Centre CARESCO Centre	Linda Smith Linda Smith Miranda CARESCO Office Vicki Pat	240478 240478 07751 798287 01487 832105 01487 832105 01487 832105

ate? Tell **SCAN** about your activities!

Advert omitted

# Music at St Mary's & All Saints' Church, Fotheringhay

Organised by Sandra Cochrane

## Sunday 12th August from 3pm - 4pm "Easy Sunday" Music "Frumenty"

Our very popular Folk Group featuring Yasmin Bradley, Geoff Brown, Paul Rogers & Helen Thompson playing guitar, bodhran, mandolin, tenor banjo, flute, whistle and percussion and vocals. Gentle, evocative English & Irish folk music often of local relevance, some penned by themselves.

Retiring Donations towards church expenses.

## Sunday 2nd September from 3pm - 4pm "Easy Sunday" Music Take4 - Saxophone Quartet

A great new experience for everyone to enjoy

- Lennie Neuhaus - Miniature Jazz Suite No 6
- Sammy Nestico - A Study in Contrasts
- Rick Hirsch - Cityscapes
- Jeffery Wilson - AAJA
- James Rae - Cinerama
- Gordon Lewin - Echoes of Spain
- Lennie Niehaus - Down By The Riverside
- Colin Crabb - Sax in the City

Retiring Donations towards church expenses.

## Friday 28th September from 7:30pm Fantastic Friday

David Milsted (rtd Head of Woodwind & Percussion Oundle School) and Friends - Alec Hone (Head of Keyboard, Oundle School) and Stephen Johnston, (rtd Head of Languages, Oundle School), tenor

A wonderful evening to be enjoyed.

Tickets £9 from Oundle Box Office (01832 274919) or Oundle Book Shop or £10 on the door

## Sunday 30th September from 3pm - 4pm "Easy Sunday" Music Three brilliant young pianists

Programmes to be confirmed.

\*\*\*\*

## St Peter's Church Oundle Saturday 22nd September at 7:30pm

Claire Colton with the v12 Jazz Group - all internationally renowned musicians.

Songs from the "Great American Song Book" including Gershwin and Cole Porter.

[www.v12jazz.com/about.html](http://www.v12jazz.com/about.html)

Tickets £10 from Oundle Box Office (01832 274919) [www.oundleboxoffice.com](http://www.oundleboxoffice.com) and Oundle Book Shop or £12.50 on the door

**This could have  
been you!**

Advertise in **SCAN** and you not only put your business in front of 3500 readers every month, but if you buy 11 insertions you get the 12<sup>th</sup> for free!

Just call Chris  
on 243336 for details.

# From The Cabbage Patch

## An Easy Kitchen Garden

PEP UP YOUR COOKING - GROW YOUR OWN HERBS

It is tempting and convenient to buy pots of herbs from the supermarket, but you can grow a much wider selection, more cheaply and generally without too much trouble.

### THE FAVOURITES

**Chives** - hardy perennial with a delicate onion flavour. Can be grown in the flower garden. The whole plant is edible, including the bulbs.

**Mint** - has a number of varieties with subtly different flavours. All are perennial and vigorous - which means invasive so confine it in a large pot.

**Coriander** - an annual; grow from seed throughout the summer. Eat both seeds and leaves, which have different flavours.

**Dill** - a hardy annual whose leaves are widely used.

**Fennel** - perennial with an aniseed flavour. All parts can be eaten, but generally it is the bulb that is most used.

**Rosemary** - an evergreen shrub, so is available all through the year. Good in a drought!

**Sage** - many forms and useful in a decorative border. An evergreen shrub, so available all through the year.

**Parsley** - easiest way is to buy a pot, but can be grown from seed. Flat leaf is the more tolerant of extreme weather and has a stronger taste.

**Thyme** - perennial, evergreen. Tolerates drought and available all year round. Several varieties that have attractive flowers. Most can be grown from seed, but more convenient is to buy a collection from the garden centre to be potted on.

### GROWING TIPS

In general, herbs don't need much feeding, but lots of sun makes for a better flavour.

Grow a selection in a tub or planter; have individual pots ready to bring indoors for winter. The bushy varieties fit into the flower garden. Remember to plant in accessible spots; you don't want wet, muddy feet when you need to pick a few sprigs for the cooking!



# Thought for Food



## Nature's Bounty

HOW TO MAKE HERBAL TEA FROM YOUR OWN HERBS

There are two ways to prepare herbal tea; an **INFUSION** (or tisane) uses leaves, flowers or berries; a **DECOCTION** uses roots, bark or seeds.

### AN INFUSION (FOR 1)

200ml of boiling water

About a heaped teaspoon of loose herbs

Use a scalded teapot, cafetiere or tea ball

Make sure the water is **boiling**

Put the lid on the pot, then cover with a tea cosy (who still has one?) or a tea towel and leave for about 10 minutes. Strain, and enjoy. If you need a sweetener, add a little honey.

### A DECOCTION

The ingredients take longer to flavour the water so, once covered with boiling water, cover with a lid and simmer for 15 minutes before proceeding as above.

NB It is important to cover the pot to prevent the essential oils from escaping.

### WHICH PLANTS TO USE

- Mint leaves and peppermint
- Rose hips (once the rose is dead)
- Lemon balm - leaves
- Chamomile buds
- Angelica - roots
- Basil
- Lavender
- Rosemary
- Thyme
- Elderflowers

## Your Community Needs You !



If you own a car, enjoy driving and helping people and have a few hours to spare a week then maybe you would consider becoming a volunteer driver for the North Hunts Community Car Scheme?

We would love you to join us, so call Dianne or Jennie on 07795 542084 to find out more.

# Thrip Advisor

## THRIPS - THE SCOURGE OF HUMANITY !

Thrips - also known as thunderflies, storm bugs or thunder bugs - are insects of the order Thysanoptera.

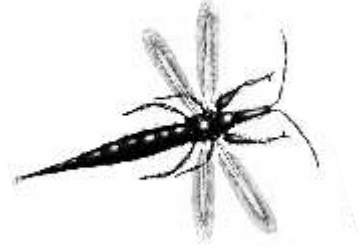
They are at their most active in hot, humid weather (you don't need to be told *that* this summer!) There are over 5000 varieties with 150 in the UK. They vary in size, but are nearly all small, around 0.5mm in length. The eggs are deposited on plants and the resulting life cycle leads to damage to the plant tissue. Almost any plant in the garden can be affected, as can commercial cereal and vegetable crops and greenhouses.

There are many websites describing biological, chemical and natural sprays, but are less helpful about dealing with an invasion in the house. It is an appalling experience to come into a room of small, black writhing insects, but they really are harmless. You will itch if they land on you, your pets won't be happy and your children will be hysterical. All you can do is brush everyone down, in order of distress, and then use your vacuum cleaner accessories to suck up the little creatures.

You will go on finding clusters for weeks - usually in or on white surfaces because they are attracted to light colours. Irritatingly, they have a habit of crawling into picture frames or, to really hack you off, between the screen and the backlight of your laptop, where they pretend to be spurious apostrophes!

Sadly, you have to accept that thrips are harmless and unavoidable and you have to live with them for a few weeks. Keeping doors and windows closed can help, but is the last thing you want to do in hot weather.

It's odd that the American screen door has never caught on in the UK, as they are very effective at keeping out flying insects. However, **SCAN** found a very effective door screen in the Betterware catalogue. Worth a try; certainly keeps flies and wasps out and may even discourage a few thrips!



### Mobile Library

**Wed 22nd August**

**Folksworth  
10:30 - 10:50am Elm Road**

**Stilton  
3:10 - 4pm  
Outside The Talbot**

**Route M24**

# New Year - New Objectives

## ORTONS ROTARY CLUB 2018/19 PROGRAMME

The Rotary year does not follow the usual calendar year as each July a new President and team take over for the next 12 months. So it's now time to present our programme of objectives for 2018/19. The following concentrate on local issues.

### SUPPORTING THE NEW ROTARACT CLUB

The newly formed Rotaract Club hopes to attract new members aged 18 to 30, who enjoy themselves by organising social events and combining some of these with fund raising. Anyone within the age group would be very welcome to come along, meet new friends and give it a try.

### OTHER GOOD CAUSES

We continue to give support to:

- Sailability on Ferry Meadows for the disabled

- The local Foodbank
- The Crocus Cafe to help Dementia sufferers and their carers
- White Cane Events
- Ortons Local Action Group.

Youth Opportunities will also again receive much support to candidates for Young Chef, Photographer, Designer or Artist, and youth exchange programmes, including camps and tours. If you know of a likely candidate please put them in touch or let us know.

Finally, if you would like to know more about Rotary please email [orton.rotary@gmail.com](mailto:orton.rotary@gmail.com)

## Yaxley Library

### OPENING TIMES

Mon	3:00 - 7:00
Tue	9:30 - 5:00
Wed	CLOSED
Thu	9:30 - 5:00
Fri	9:30 - 1:30
Sat	9:30 - 1:30

Renewals & enquiries:  
(0345) 045 5225

[www.cambridgeshire.gov.uk/library](http://www.cambridgeshire.gov.uk/library)

## Hi-Lite

**UNISEX  
HAIRDRESSERS**



Tue 9 - 5  
Wed 9 - 5  
Thu 9 - 5  
Fri 9 - 7  
Sat 8 - 4

8 Church Street  
Stilton  
(01733) 244330

# Staying Safe in the Heat

TIMELY ADVICE FROM CAMBS FIRE & RESCUE

With temperatures hitting record highs, fires in open areas of land can easily spread and become out of control. Something as simple as not stubbing a cigarette out properly, or using a disposable barbecue on grass, can start a fire that can develop quickly.'

There are seven simple steps to help prevent an outdoor fire:

- Ensure cigarettes are completely out
- Do not throw cigarettes out of car windows
- Put disposable barbecues on bricks; do not place directly on grass
- Do not leave glass bottles lying on the ground; even broken fragments can focus the sun's rays and can start a fire
- When camping, never leave campfires unattended and make sure it is completely out before you leave it
- Use barbecues on a hard, flat surface, away from grass, shrubs or fencing
- Talk to your children about the dangers of starting a fire

## Stilton Pavilion

OPEN FOR BOOKINGS!

Community Room rates from:

- £6 / hour daytime
- £8 / hour evenings

Main Hall rates from:

- £10 / hour daytime
- £16 / hour evenings

Attractive rates for commercial hire and other options

For information, see [www.stilton.org/facilities/stilton-pavilion/](http://www.stilton.org/facilities/stilton-pavilion/)

For all enquiries, please contact the Amenities Manager, Julian Pagliaro:  
07484 746894 | [stiltonpavilion@gmail.com](mailto:stiltonpavilion@gmail.com)

If leaving a message, please provide a **LANDLINE PHONE NUMBER** and you will be contacted promptly. (It's very expensive having to reply to lots of mobiles!)

If using email, please be sure to give us your **CORRECT** email address and check your spam box if you don't receive a prompt reply.



# Keeping Well

News from the Wellside Clinic  
(01487) 830340



## Clinical Team

Dr Lekshmi Panicker has now joined the practice GP team.

In addition, we have recently been re-accredited as a GP Training Practice and our first GP Trainee - Dr Faye Stevens - will be with us from 1<sup>st</sup> August. Faye is a third year Trainee and is now on the last stage of her GP training. Faye will be working in the practice Monday to Thursday inclusive.

Dr Jarosz is going to be taking a few weeks leave over the summer period. She will be returning at the beginning of September.

Our GP team are currently available for consultation as follows:

Mon	Drs Archer, Smith and Uszycka
Tues	Drs Smith, Pasco and Panicker
Wed	Drs Archer, Smith, Richardson, Uszycka and Panicker
Thurs	Drs Uszycka, Pasco and Panicker
Fri	Drs Archer, Smith and Richardson

In order to ensure our patients are given an appointment with the most appropriate clinician we recently introduced a change to our booking process whereby our reception team ask for some brief information about the medical problem. We would like to thank our patients for understanding the need to introduce this, and for embracing the change, which allows us to ensure we can continue to provide a high level of care to all of our patients.

*Best Regards,  
Mrs Claire Wright, Practice Manager*

## Regular events for children who love trains!

Book a one-hour session for your child to come and play with our battery-operated trains on the BIGGEST track they have seen!

£5 per child for one hour's play - adults come for free! Pre-booking is essential.



Train Tots

The next event is on Sunday 16th September at Queens Park Pavilion in Yaxley.

For full details and to book a space please visit our Facebook page or email us.

[www.facebook.com/traintots](http://www.facebook.com/traintots) Email: [traintots@outlook.com](mailto:traintots@outlook.com)

*Also available to hire for children's parties.*

